

CSL SOFT

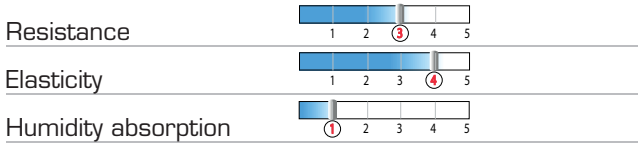
MICROFIBRE

1- Description of material

New CSL soft, a more elastic and thinner microfibre.

2 - Technical information

Microfibre with a polyurethane coating for superior suppleness and a leather look.



3 - Characteristics

Thickness: 0.65 mm

Colour: Grey Ref X3 : **PO1ACSL_06_GR**

Colour: Black Ref X3 : **PO1ACSL_06_NR**

Sheet size: 1300 mm x 800 mm

Also available in a roll 



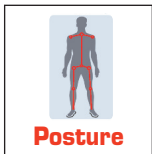
Grey



Black



Roll: 12 cm x 10 m
Grey or Black



The size, thickness, colour and other technical data stated for the materials may vary between manufacturing batches (tolerance of +/- 30%).

CONTACT HEADQUARTER

INTERNATIONAL SALES DPT:
PA Champfeuillet EST - 1B, rue Léon Béridot
38509 VOIRON CEDEX - France - Ph. +33 4 76 67 07 07
exportmedical@sidas.com