

PODIAMIC 125 M.P.

PE-EVA FOAM

1 - Description of material

A PE-EVA formula that makes it a very versatile and hardwearing top layer.

2 - Technical information

Closed-cell reticulated polyolefin foam.
Contains an antibacterial treatment.

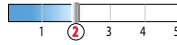
Shore A



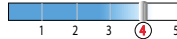
Density



Resistance



Elasticity



3 - Characteristics

Thickness: 1.5 mm

Colour: Light blue X3 ref.: *PO1DPODC125MP_1A_BL*

Sheet size: 800 mm x 1000 mm

Roll size: 30 cm x 4.80 m



Thickness: 2.5 mm

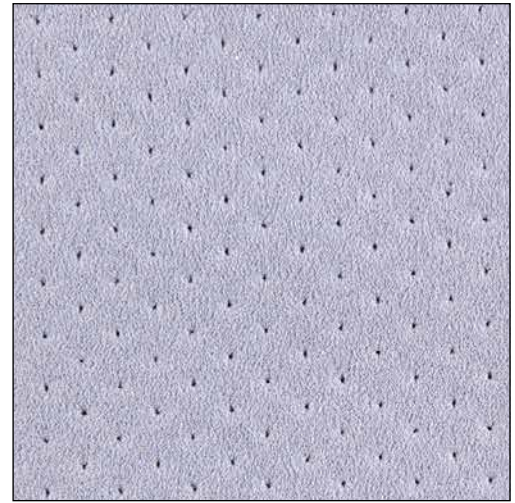
Colour: Sky blue X3 ref.: *PO1DPOD125MP_2A_B*

Sheet size: 1150 mm x 1150 mm

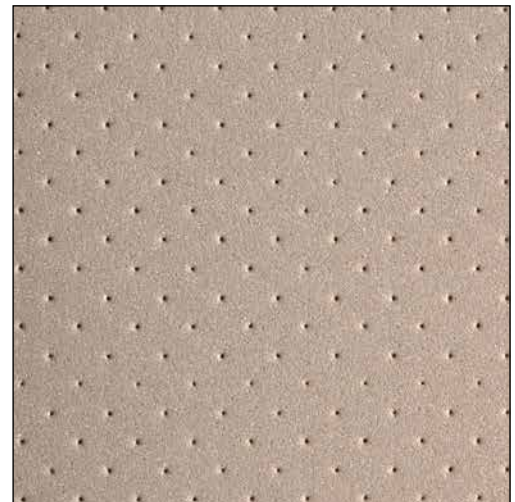
Thickness: 2.5 mm

Colour: Brown X3 ref.: *PO1DPODC125MP_2A_MA*

Sheet size: 750 mm x 950 mm

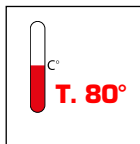


Light blue



Brown

T
T



The size, thickness, colour and other technical data stated for the materials may vary between manufacturing batches (tolerance of +/- 30%).

CONTACTS

PODIATECH SALES DEPARTMENT
PA Champfeuillet EST - 18, rue Léon Béridot
38516 VOIRON CEDEX - France - Tel.: +33 (0)4 76 67 07 15 or 23
podiatech@sidas.com



Limited walking



Walking



Running



Intense running

SIDAS SAS, Capital €600,000 - APE code 3250 A - COFRP & TRADE REG.No. 304 577 661
00073 - Grenoble INTERCOM. VAT No. FR 76 304 577 661 REF FTMENG 01/18



ACCESS
SPECIALISED
TRIED & TESTED

Our expertise with you
every step of the way

www.podiatech.com